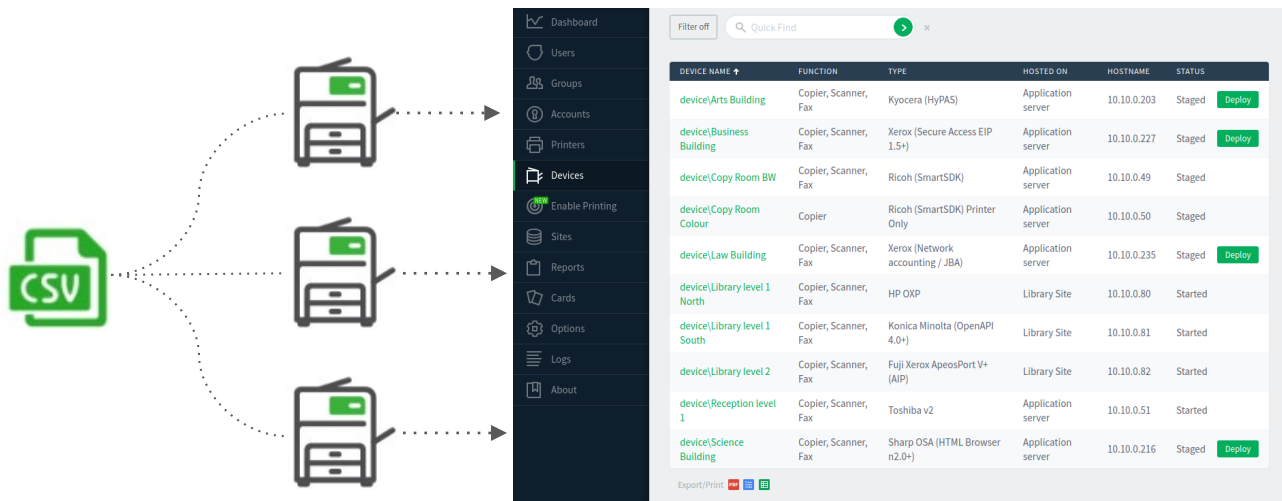


Enhanced MFD Deployment



What is it?

- ▶ This feature adds devices in bulk to PaperCut via a CSV file.
- ▶ Suitable for large rollouts: 10+ or 20+ devices.



The diagram illustrates the process of bulk adding devices to PaperCut. A green CSV file icon is shown on the left, with three dotted arrows pointing to three printer icons. These printer icons are then shown being added to the PaperCut interface, which is displayed on the right. The interface shows a sidebar with 'Devices' selected and a table of device details.

DEVICE NAME ↑	FUNCTION	TYPE	HOSTED ON	HOSTNAME	STATUS
device\Arts Building	Copier, Scanner, Fax	Kyocera (HyPAS)	Application server	10.10.0.203	Staged Deploy
device\Business Building	Copier, Scanner, Fax	Xerox (Secure Access EIP 1.5+)	Application server	10.10.0.227	Staged Deploy
device\Copy Room BW	Copier, Scanner, Fax	Ricoh (SmartSDK)	Application server	10.10.0.49	Staged
device\Copy Room Colour	Copier	Ricoh (SmartSDK) Printer Only	Application server	10.10.0.50	Staged
device\Law Building	Copier, Scanner, Fax	Xerox (Network accounting / JBA)	Application server	10.10.0.235	Staged Deploy
device\Library level 1 North	Copier, Scanner, Fax	HP OXP	Library Site	10.10.0.80	Started
device\Library level 1 South	Copier, Scanner, Fax	Konica Minolta (OpenAPI 4.0+)	Library Site	10.10.0.81	Started
device\Library level 2	Copier, Scanner, Fax	Fuji Xerox ApeosPort V+ (AIP)	Library Site	10.10.0.82	Started
device\Reception level 1	Copier, Scanner, Fax	Toshiba v2	Application server	10.10.0.51	Started
device\Science Building	Copier, Scanner, Fax	Sharp OSA (HTML Browser n2.0+)	Application server	10.10.0.216	Staged Deploy

Evolution



Before

Each device had to be added to PaperCut manually via the admin console web UI, one by one.

After

Attributes for each device can be added to a CSV file which is used to add all devices in 1 go.

	19.2	20.0
Deploy multiple devices in bulk	✓	✓
Stage multiple devices in bulk		✓
Bulk-deploy CSV via server command	✓	✓
Bulk-deploy CSV via PaperCut UI		✓

Feature history



20.0

19.2

19.1

Platforms

- ▶ **Sharp** (OSA 3.5 and HTML Browser n2.0+)
- ▶ **Kyocera** HyPAS
- ▶ **Ricoh** Smart SDK

- ▶ **Dell** (AIP)
- ▶ **Fuji Xerox** (ApeosPort V+ AIP, old AIP)
- ▶ **HP** (OXF integration including Printer-Only devices)
- ▶ **Konica Minolta** (OpenAPI4.0+)
- ▶ **Sindoh** (OpenAPI4.0+)
- ▶ **Toshiba** (v2 and v3+)
- ▶ **Xerox** (Secure Access EIP 1.5+ including Printer-Only devices, Network Accounting / JBA)

CSV file

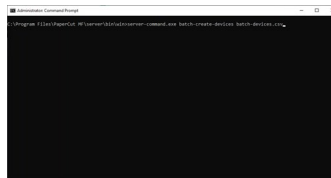
Add MFDs attributes to CSV



	A	B	C	D	E
1	deviceType	deviceName	deviceIp/name/otp	deviceAdminUser	deviceAdminPass
2	DELL	Library Student Printer	10.10.0.80	admin	admin
3	DELL	Yr 9 Building Printer	10.10.0.203	admin	admin
4	DELL	Copy Room BW	10.10.0.49	admin	admin
5	DELL	Copy Room Colour	10.10.0.205	admin	admin
6	DELL	Reception level 1	10.10.0.64	admin	admin
7	DELL	Art Building level G	10.10.0.246	admin	admin

Server commands

Import CSV data via server command



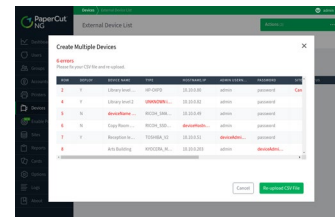
Installed live devices

Deploy devices already installed



UI Wizard

Import CSV data via PaperCut UI



To-be-installed devices

Add devices as **staged** before their
to site



Where to find the feature



Your license will expire in 7 days. Please contact sales to obtain a license. [Click here for license order information](#)

Devices > External Device List admin

External Device List

External Device List Scan Actions Scan Notifications ^{new}

Filter off > x

DEVICE NAME	FUNCTION	TYPE	HOSTNAME	STATUS
Export/Print				

Actions (3)

- Create device
- Create multiple devices ^{new}
- Copy settings from device to device

Devices

- Enable Printing
- Reports
- Cards
- Options
- Logs
- About

PaperCut MF 20.6.0 (Build 53820 2020-03-06)
Print Management Software
© Copyright 1999-2020. PaperCut Software International Pty Ltd. All rights reserved.

PaperCut MF trial license, 7 days remaining.



UI Wizard



On the previous screen, clicking on “*Create multiple devices*” opens the wizard screen where you can:

Create Multiple Devices

PaperCut MF now lets you create and deploy multiple devices at the same time with an easy one-time upload of a CSV file.

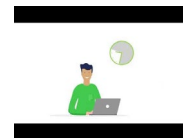
Watch the video get familiar the [Enhanced MFD Deployment](#) feature.
See the [step by step video](#) here.

Instructions

- 1 [Download our CSV file template](#) and populate it with some basic details for each printer. You can do this with any CSV file editor like Excel or Google Sheets.
- 2 Upload the populated CSV file to let PaperCut MF configure your printers.
- 3 Deploy your newly configured printers, or keep them ready to deploy for later (particularly handy if a printer is yet to physically arrive on site).

[Upload CSV File](#)

A) Watch the feature video



A) Watch the step by step video



A) Download CSV template

	A	B	C	D	E	F	G	H	I	J	K
1	deviceType	deviceName	deviceManufacturer	deviceModel	deviceSerialNumber	deviceLocation	deviceStatus	deviceGroup	deviceGroupLocation	deviceGroup	deviceGroupLocation
2											
3											
4											

A) Upload CSV file



CSV template

The Wizard directs the user to download the CSV file template with the following fields.

Value is mandatory for each field

Values are optional, but headers are mandatory

	A	B	C	D	E	F	G	H	I	J	K
1	deviceType	deviceName	deviceHostnameOrIp	deviceAdminUser	deviceAdminPass	siteServerName	printQueues	findMeQueues	deploy	groups	location
2											
3											
4											
5											
6											

v19

v20



CSV sample data

Field value
is optional

Value is mandatory for each field

Values are optional, but headers are mandatory

	A	B	C	D	E	F	G	H	I	J	K
1	deploy	deviceType	deviceName	deviceHostnameOrIp	deviceAdminUser	deviceAdminPass	siteServerName	printQueues	findMeQueues	groups	location
2	Y	HP-OXPD	Library level 1 North	10.10.0.80	admin	password	Library Site	papercut\library-printer	papercut\library-l1-north;papercut\library-l1-south;papercut\library-l2	Library	Library
3	Y	KONICA_MINOLTA_4	Library level 1 South	10.10.0.81	admin	password	Library Site	papercut\library-printer	papercut\library-l1-north;papercut\library-l1-south;papercut\library-l2	Library	Library
4	Y	FX_APEOSPORT_VI	Library level 2	10.10.0.82	admin	password	Library Site	papercut\library-printer	papercut\library-l1-north;papercut\library-l1-south;papercut\library-l2	Library	Library
5	N	RICOH_SMARTSDK	Copy Room BW	10.10.0.49	admin	password				HQ;Copy Room	HQ
6	N	RICOH_SSDK_PRN	Copy Room Colour	10.10.0.50	admin	password				HQ;Copy Room	HQ
7	Y	TOSHIBA_V2	Reception level 1	10.10.0.51	admin	password				HQ;Reception	HQ
8		KYOCERA_MITA	Arts Building	10.10.0.203	admin	password					Faculty of Arts
9		SHARP_OSA_N2	Science Building	10.10.0.216	admin	password					Faculty of Science
10		XEROX_EIP2	Business Building	10.10.0.227	admin	password					Faculty of Business
11		XEROX	Law Building	10.10.0.235	admin	password					Faculty of Law

v19

v20

The order of the columns is not important.

Devices added via CSV



Dashboard

Users

Groups

Accounts

Printers

Devices

Enable Printing

Sites

Reports

Cards

Options

Logs

About

Filter off

Quick Find

DEVICE NAME ↑	FUNCTION	TYPE	HOSTED ON	HOSTNAME	STATUS	
device\Arts Building	Copier, Scanner, Fax	Kyocera (HyPAS)	Application server	10.10.0.203	Staged	Deploy
device\Business Building	Copier, Scanner, Fax	Xerox (Secure Access EIP 1.5+)	Application server	10.10.0.227	Staged	Deploy
device\Copy Room BW	Copier, Scanner, Fax	Ricoh (SmartSDK)	Application server	10.10.0.49	Staged	
device\Copy Room Colour	Copier	Ricoh (SmartSDK) Printer Only	Application server	10.10.0.50	Staged	
device\Law Building	Copier, Scanner, Fax	Xerox (Network accounting / JBA)	Application server	10.10.0.235	Staged	Deploy
device\Library level 1 North	Copier, Scanner, Fax	HP OXP	Library Site	10.10.0.80	Started	
device\Library level 1 South	Copier, Scanner, Fax	Konica Minolta (OpenAPI 4.0+)	Library Site	10.10.0.81	Started	
device\Library level 2	Copier, Scanner, Fax	Fuji Xerox ApeosPort V+ (AIP)	Library Site	10.10.0.82	Started	
device\Reception level 1	Copier, Scanner, Fax	Toshiba v2	Application server	10.10.0.51	Started	
device\Science Building	Copier, Scanner, Fax	Sharp OSA (HTML Browser n2.0+)	Application server	10.10.0.216	Staged	Deploy

Export/Print PDF CSV

Documentation

Feature manual

A detailed manual can be found on the portal at:

<https://portal.papercut.com/products/enhanced-deployment/>

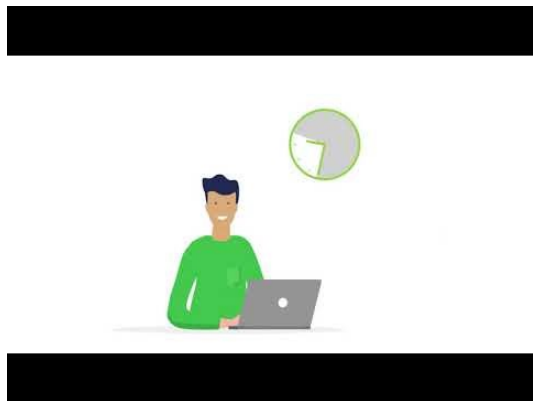


Videos



Feature video

Brief explanation of the feature and its benefits.



Import CSV via UI

Screen-recording of CSV file being used to add devices to PaperCut MF.



Device Config Automation

Importing customized columns on CSV via server commands.

