

# PaperCut Cloud Services

PaperCut Cloud Services are a collection of PaperCut services that run on the Google Cloud Platform.

These services make it simple to digitize your information. The services include:

## Scan to Cloud Storage

In a few clicks, users can securely scan documents to a growing list of cloud storage connectors, including:

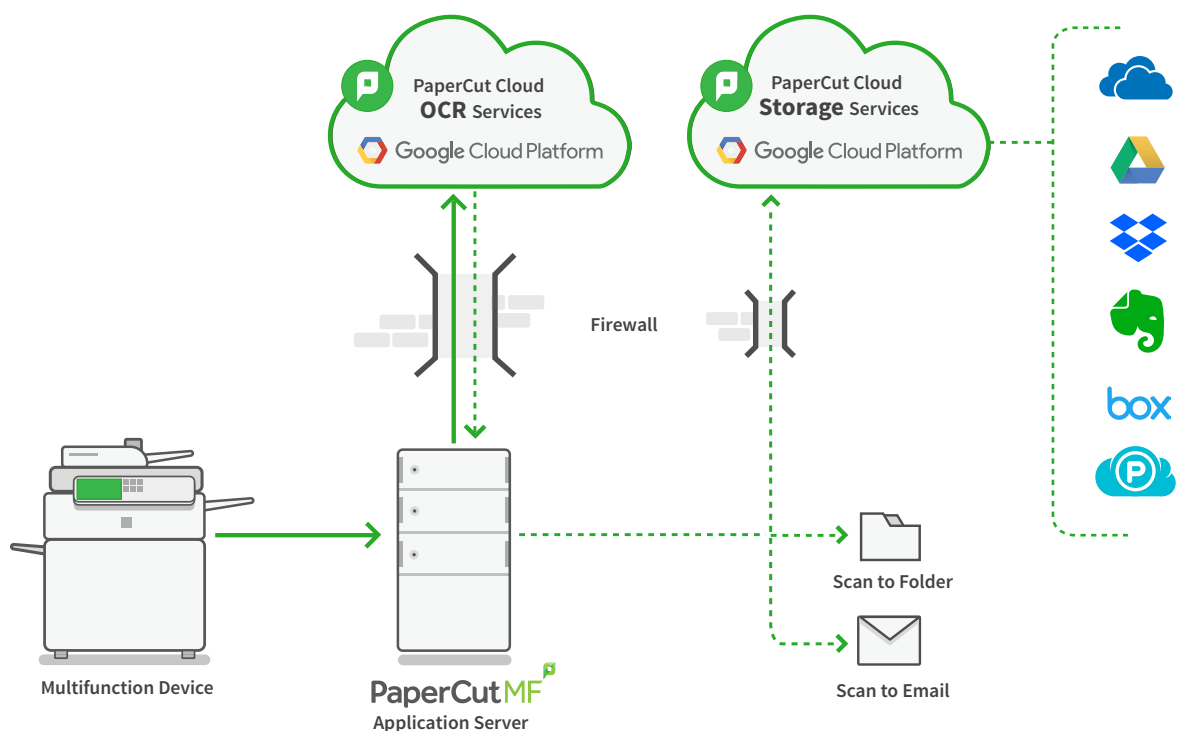
- Google Drive
- OneDrive (Personal/Business)
- Dropbox (Personal/Business)
- Box
- Evernote
- PCloud.

## Cloud OCR

Using OCR (optical character recognition), convert paper documents to text searchable and editable digital documents. Find what you need, and make any amendments to scanned information, fast.

PaperCut Cloud Services take away your worry about managing the system performance of local infrastructure; the heavy lifting of document processing is done in the cloud.

This approach also allows PaperCut to rapidly deliver features to your door without any down time at your end. Plus, you don't need to upgrade your PaperCut MF installation to get new features; they're automatically deployed to PaperCut Cloud Services and available to you instantly.



## How do PaperCut Cloud Services improve your digital workplace?

- **Cost cutting** - no need to purchase and maintain on-premise infrastructure.
- **Flexibility** - your workforce can embrace a more mobile way of working.
- **Instant updates** - new functionality delivered without the downtime required for on-premise software.

## How do I access PaperCut Cloud Services?

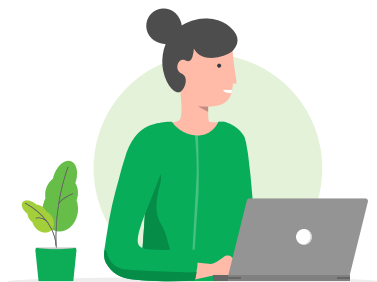
You'll need active PaperCut Maintenance and Support.

## How secure are PaperCut Cloud Services?

PaperCut Cloud Services run on the Google Cloud Platform. That's the same infrastructure Google uses for its own products such as Search, Drive, and Maps. As such, PaperCut Cloud Services take advantage of the [same security model](#).

All scan jobs and data are encrypted with signed certificates and transmitted over HTTPS following industry security best practices.

The [HTTPS connections are securely encrypted](#), which means that even if somebody managed to break into the connection, they couldn't decrypt any of the data that passes between you and the cloud storage location.



## What about reliability?

Google states that the Google Cloud Platform service provides 99.95% monthly uptime percentage to customers. This is an industry standard for high reliability and quality also provided by vendors such as Amazon and Microsoft.

## Privacy and regulatory compliance

If data sovereignty is a concern in your workplace, it's simple to configure the region you want your documents to travel through and be stored in. Current locations include USA, Europe (Germany), and Australia.

## GDPR compliance

PaperCut MF currently retains some standard information about scan jobs in order to create a seamless experience for users when linking their PaperCut identity with their cloud identity. These details can be redacted in accordance with the General Data Protection Regulation (GDPR).

For more information about GDPR, see [General Data Protection Regulation \(GDPR\)](#).

### Want more information on PaperCut Cloud Services?

See the Cloud Services FAQs section of the [PaperCut website](#).