

DocSlide

TAKE CONTROL OF YOUR SCANNED DOCUMENTS



WHAT IS DOCSLIDE?



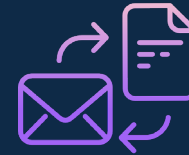
Add security and flexibility to your scanning processes



HTTPS Link notification to download scanned documents.
Document encrypted while waiting for user to collect it.



PaperCut Integration
Metadata from XML or from document name to be used for routing the document.



Umango Integration
Any document format (PDF, Word, Excel...).



Privacy
Authenticated Service.



Processors:
Archive, Merge, Sign, Metada



Upload/Download & Managing
scan jobs via web portal

DocSlide scan to user mail with encrypted https link and Umango OCR

User

User scans document from a device using integrated scanning in PaperCut

User receives mail with link, only they can download the scanned file.

Flow



MFD



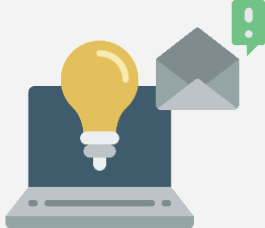
PaperCut



DocSlide



Umango



User Email

System

Papercut sends scanned job to DocSlide and file name contains user login

DocSlide receives job and sends to Umango for OCR. Once received back DocSlide saves in a secure folder, encrypts and sends to user mail with encrypted https link to the file.

Umango receives scanned job from DocSlide, takes user details, processes proper OCR function and sends the file with metadata back in DocSlide

Benefits

- PaperCut is easy to use
- Personalization
- No Cost for IS
- One point of configuration
- Multi-vendor support
- Flexibility
- Encryption of scanned files
- Secure upload and download of scan files
- Admin can't see files
- Automatic deleting of older files
- Two OCR engines
- Standalone solutions
- Unlimited OCR pages
- Hot folder and mail source
- Small mail size containing just text message
- Mailbox not cluttered big attachments
- Single user download

Scan from DocSlide User Portal to mail with link and back to DocSlide user portal (with Umango OCR)

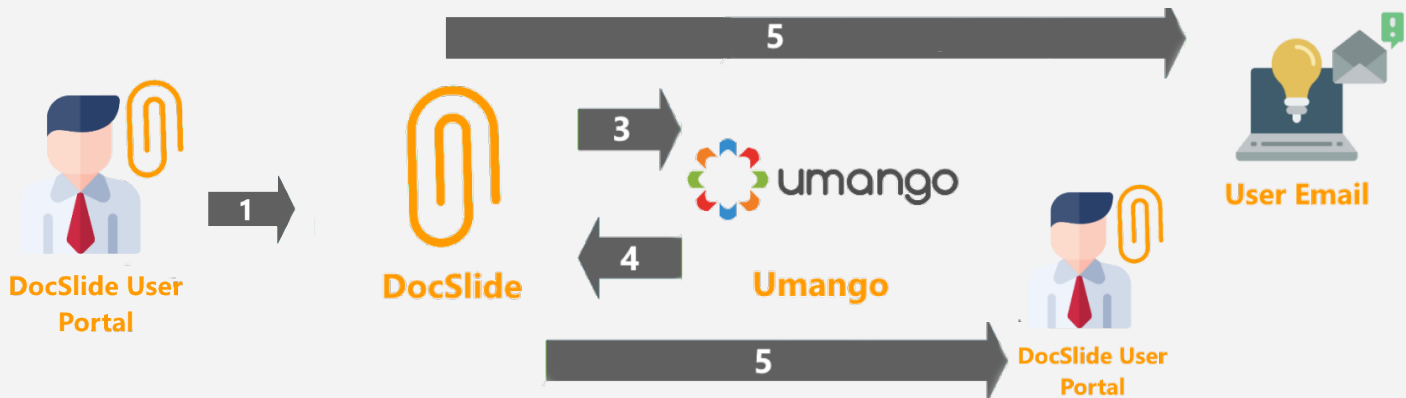
User

User just uploads any document to the desired flow

User receives files to their DocSlide portal for further manipulation

User receives mail with link, only they can download scanned file.

Flow



System

DocSlide takes the job and sends to Umango for OCR. After receiving the job back from Umango it is saved in a secure folder. It is then encrypted and sent to user's mail with encrypted https link to the file and is also sent to the DocSlide User Portal

Umango receives scanned job from DocSlide, takes user details, processes correct OCR and sends back the ready file with metadata back to DocSlide

Benefits

- Flexible source via portal
- Unlimited flows
- New idea for delivering jobs for scanning and OCR
- Encryption of scanned files
- Secure upload and download of scanned files
- Admin cannot view files
- Automatic deletion of older files
- Two OCR engines
- Stand-alone solution
- Unlimited OCR pages
- Hot folder and mail source
- Mass job management
- Download, delete functionality
- In future more user actions possible
- Small mail size with just text message
- Mailbox without big attachments
- Single user download

General

- Easy 5 min installation
- Embedded db for configuration and SMTP server for receiving email with scans to process
- Windows and Linux supported
- Easy to add localization by translating one file. Now we have English, Polish, Spanish, Turkish, Swedish, Dutch, French, Russian and German.
- Managed via web portal, any browser
- Has user portal for files management – download and upload

Integration

- Integrate with LDAP, AD and Papercut via web services for searching information about user attributes
- Able to integrate with fax server by using scan documents and user data and send it directly for fax servers with all necessary information's

Input - Output

- Receives scan files with xml metadata and process them
- Receives scan file and use files names to process them
- Receives scan file via email and process them
- Receives scan jobs via hotfolders and process them
- Store scan files at secure folder and encrypt them
- Delete automatically scan files after configured timeout
- Sends email with https link to store and encrypted file
- Define output destinations like, email with attachment, email with https link, any folder or home folder of user and portal
- Able to store scan jobs in many destination during one scan process

Processes

- Allow only to download scan file only by creator of the scan or to everyone
- Take user info based on time of scan job via PaperCut web services when email from is not possible
- Able to archive scan jobs with user metadata
- Export scan files and create any metadata file using system variables - json, txt, xml, xst

DocSlide new features

- Public and private email link as option for flows

Send as link

Delivery by link settings:

Size Limit (in Bytes):
1

Link pattern:
 + ▾

Subject:
 + ▾

Mail body:
 + ▾

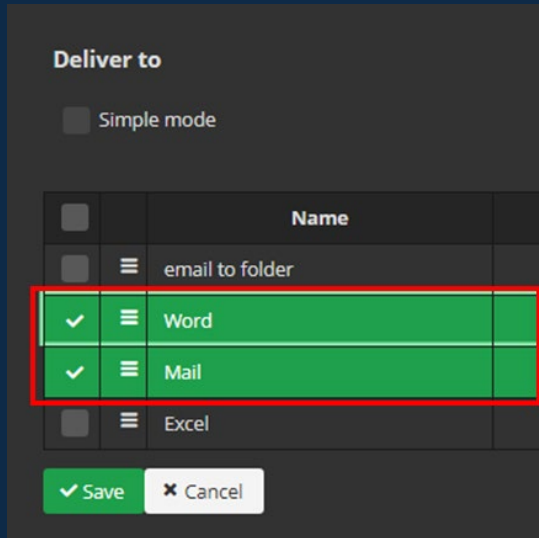
Send as HTML

Allow anonymous access



DocSlide new features

- Scanning documents to multi destination for advanced flows



DocSlide new features

- Personalization of flows and processors per user or user group

Editing flow PDF merge

Flow label

PDF merge

Description of the flow

This template gives you possibility to merge few PDFs to one PDF file and send it to email and DS portal. Just select files and done :)



Allowed file extensions (with dot, ex. .pdf or .*), confirm with [ENTER]

.pdf ✕

Use advanced upload ⓘ

Allowed groups

DS Portal ▾

Archive (archive)

Archive folder

C:\DocSlide\DEMO\Archive\[user_login]



Excluded groups

DS Portal ▾

Excluded users

✓ Save

✕ Cancel



DocSlide new features

- IMAP source substitute of Umango which doesn't support it

Editing flow IMAP Word Mailbox

Server
10.0.2.15

Port
143

Use SSL

Use TLS connection

User name
word@its.local

Password
.....

Interval in minutes
1

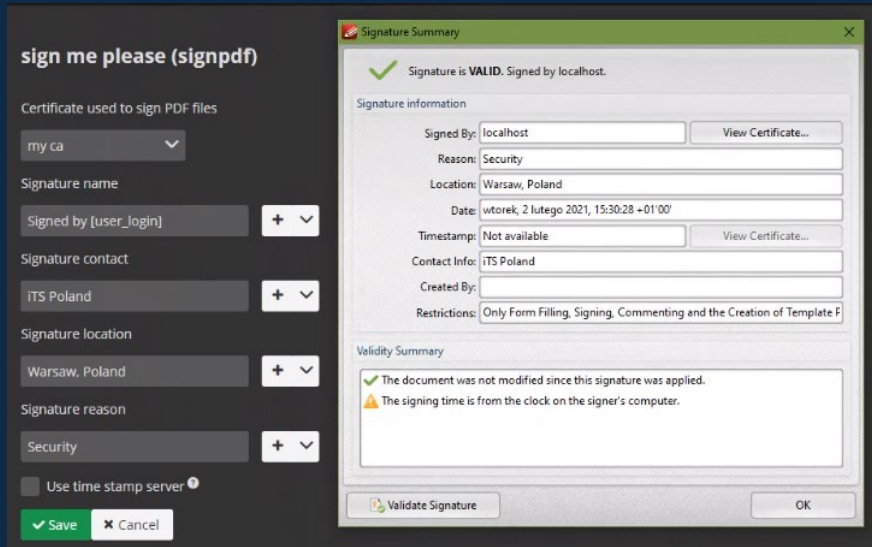
Allowed file extensions (with dot, ex. .pdf or .*), confirm with [ENTER]
.tif × .tiff × .pdf ×

Allow any sender



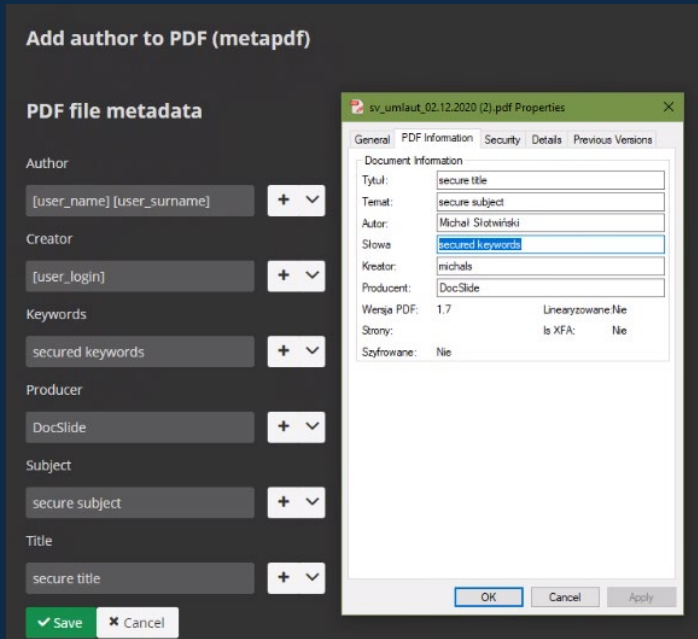
DocSlide new features

- Signing PDF documents with certificate



DocSlide new features

- Using DocSlide metadata and storing it to PDF properties



License

- Server license, no restrictions on users, templates and processes
- User portal download module
- M&S as in PaperCut
(1y-20%, 2y-40%, 3y-45%, 4y-60%, 5y-75%)

| | |
|--|---|
| Advanced Print Enablement Pack | <input type="checkbox"/> PCMF-{}PEPK |
| On-Premise OCR and Document Processing Pack | <input type="checkbox"/> PCMF-{}DPPK |
| Pumac (Guest card transaction viewer) | <input type="checkbox"/> ITS-PUMAC |
| DocSlide (Scan to encrypted one time URL) | <input checked="" type="checkbox"/> ITS-DOCSLIDE |
| DocSlide Upload Module | <input checked="" type="checkbox"/> ITS-DOCSLIDE-UPLD |
| Unlimited User Licence Conversion (includes unlimited users, site servers, advanced clients and desktop widgets) | <input type="checkbox"/> PCMF-{}UU |
| Installation of Web Payment Gateway | <input type="checkbox"/> INS-WEBPAY |

TECHNICAL REQUIREMENTS

Installation essentials

Windows Server Requirements

DocSlide requires the following:

- Microsoft Windows 2012 / 2016 / 2019 Server with all the latest service packs and updates (64-bit).
- Linux distribution supported by .NET Core 3.1 (list on <https://docs.microsoft.com/en-us/dotnet/core/install/linux>)
- Microsoft Net Core Component

Recommended Windows Server Specification

- 2 core 3 Ghz or better
- 4 GB RAM minimum 16GB RAM or better recommended
- 40 GB free disk space
- Virtualised servers are fully supported.

Firewall and Network

- You need to open at firewall and network port 12120

User and Admin Portal

The DocSlide portal requires the following browsers:

- Internet Explorer 11
- Google Chrome
- Mozilla Firefox
- Microsoft Edge

